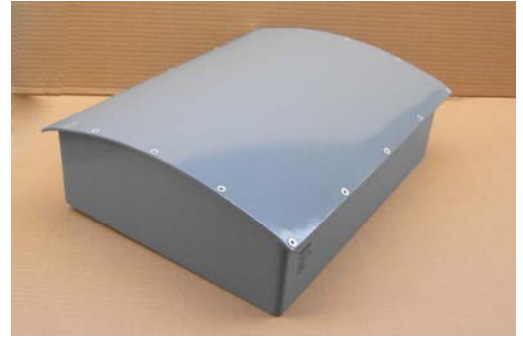


VERDANT JU C 225

UHF SatCom Conformal Antenna

JU C 225 is a broadband UHF SatCom Conformal Antenna for airborne UHF satellite communications. The rugged design and construction of the antenna helps to withstand severe environmental conditions. This antenna is ideally suited for high performance supersonic aircrafts.



SPECIFICATIONS

ELECTRICAL

Frequency Range	240-320 MHz
VSWR	≤ 2.5:1
Polarization	LHCP
Beamwidth	75°±10° (with Typ Gain of 0 dBi at 90 deg BW)
Radiation Pattern	High Angle Pattern
Impedance	50 Ohms
Axial Ratio	3 dB typical
Power RF	200 Watts CW

MECHANICAL

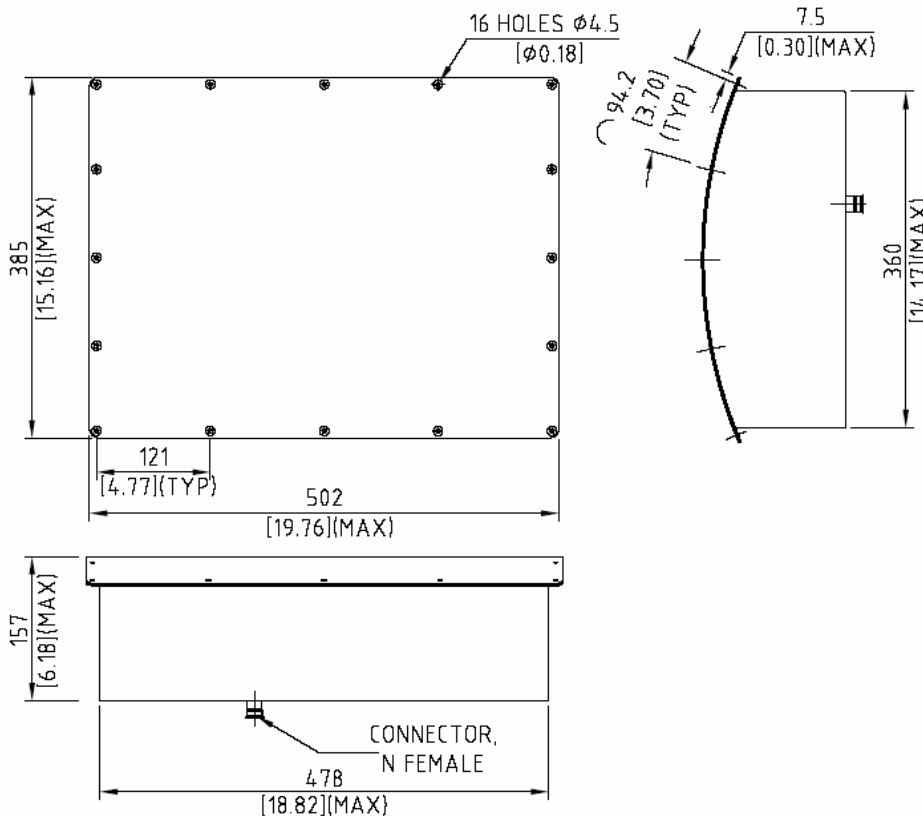
Weight	5200 grams (Max)
Height	157 mm (Max)
Material	Reinforced Glass Epoxy
Finish	Gloss / Matt
Connector	N female

ENVIRONMENTAL

Temperature	-54°C to +90°C
Altitude	60,000 feet

*Contact us for your customized requirements

Tests in accordance with MIL 810 F



Dimensions are in mm
Inches shown in bracket

0413 Rev 00



VERDANT TELEMETRY & ANTENNA SYSTEMS Pvt. Ltd.
COCHIN – 682013, INDIA.
Tel: +91-484-2663104 Fax: +91-484-2663576
e-mail: sales@verdanttelemetry.com
Website : www.verdanttelemetry.com

*All data contained herein is subject to change without notice

